

REFLECTING ON THIS YEAR AND PREPARING FOR NEXT

Mr Kelly: Assistant Headteacher



- The Hair Policy
- Clarification over footwear
- Reminder about piercings / make-up
- Reminder about basic equipment
- Communication platform



Piercings

No piercings, no plasters.

If your child is getting piercings over the summer, ensure that there is enough time for them to heal before returning in September.



Skirts – No changes to the Policy. Just a reminder...

- Grey skirt in a 2 pleated back and front style (not straight). The skirt must not be more than 6cm above the knee. No other designs are acceptable and skirts must not to be rolled up.
- Over the summer, please ensure that skirts are of an appropriate length and meet the above requirements.

Socks

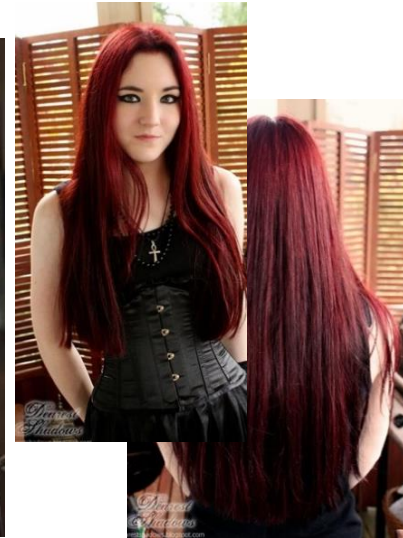
No sport socks, no frills



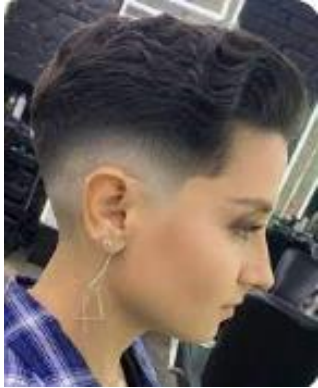
Examples of Acceptable Hair Colours



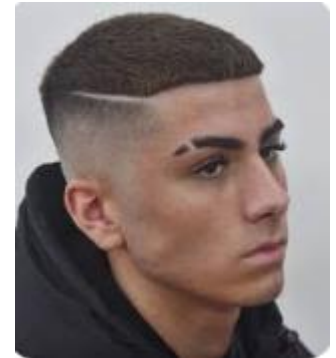
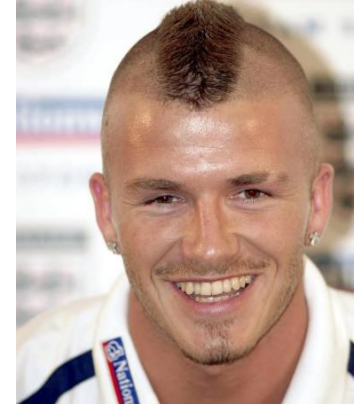
Unacceptable Hair Colours



Yes



No



Additional Guidance

- Footwear must appear to be shoe like rather than trainer like.
- In general shoes made by sportswear manufacturers are likely to be deemed trainers.
- A shoe marketed as a school shoe may not be acceptable at Blue Coat.
- Shoes that cover the ankle are deemed to be boot

Examples of unacceptable shoes

The examples below will support parents in understanding what is deemed acceptable as a school shoe at Blue Coat. The photographic examples are by no means exhaustive, but serve to show key features of footwear that is **not acceptable** for school. Girls shoes should never include a heel.

1. Shoes that have an appearance like pumps through either canvas material or yellow rubber soul. Converse and Vans are not school shoes.



2. Black trainers with Velcro straps are not acceptable as shoes. Whilst some shoes carry Velcro straps if the manufacturer is associated with sport, these will be deemed inappropriate. (e.g Lonsdale, Nike)



3. Any shoe that covers the ankle is deemed to be a boot and is inappropriate for school. (e.g. Timberland, Ugg and Kickers boots)



4. Shoes with additional decoration or features that stand out (such as a large crepe sole) are not acceptable as school shoes.



No sports brand e.g Adidas



2. Black trainers with Velcro straps are not acceptable as shoes. Whilst some shoes carry Velcro straps if the manufacturer is associated with sport, these will be deemed inappropriate. (e.g Lonsdale, Nike)



Additional Guidance

- Footwear must appear to be shoe like rather than trainer like.
- In general shoes made by sportswear manufacturers are likely to be deemed trainers.
- A shoe marketed as a school shoe may not be acceptable at Blue Coat.
- Shoes that cover the ankle are deemed to be boot

Examples of unacceptable shoes

The examples below will support parents in understanding what is deemed acceptable as a school shoe at Blue Coat. The photographic examples are by no means exhaustive, but serve to show key features of footwear that is **not acceptable** for school.

Girls shoes should never include a heel.

1. Shoes that have an appearance like pumps through either canvas material or yellow rubber soul. Converse and Vans are not school shoes.



2. Black trainers with Velcro straps are not acceptable as shoes. Whilst some shoes carry Velcro straps if the manufacturer is associated with sport, these will be deemed inappropriate. (e.g Lonsdale, Nike)



3. Any shoe that covers the ankle is deemed to be a boot and is inappropriate for school. (e.g. Timberland, Ugg and Kickers boots)



4. Shoes with additional decoration or features that stand out (such as a large crepe sole) are not acceptable as school shoes.



3. Any shoe that covers the ankle is deemed to be a boot and is inappropriate for school. (e.g. Timberland, Ugg and Kickers boots)



Equipment- Non-negotiables every day

Pen 1- Black or blue

Pen 2- Red, green or purple

Pencil

Ruler

Highlighters

Rubber

Whiteboard pen

Calculator

Pencil Case

Expectation: We are on time to registrations and lessons.

Why?

At the Blue Coat we value respect.

- Punctuality is really important. If we are late, it not only impacts on our learning, but we disrupt the rest of the class and impact on their learning. Lateness impacts on the start and quality of lessons and it is unfair if people are being disrupted because of our choices.
- Being on time is a mark of respect. People's time is precious, and it is important that we do not waste another person's time. We show people we value and appreciate other people's time by arriving punctually and ready to learn.
- As adults we are held to account for our punctuality in the workplace. It is important for young people understand the importance of attendance and punctuality as they prepare for adulthood and the workplace. We are also asked to report on punctuality when we write references for you for higher educational institutes and employers.

Research has documented

If in a school year, you are late every day by	You have approximately lost	Or you would have missed approximately
5 mins	3.5 days from school	18 lessons
10 mins	7 days from school	35 lessons
15 mins	10 days from school	50 lessons
20 mins	14.5 days from school	73 lessons
30 mins	22 days from school	110 lessons

How will you be challenged:

Staff will remind you of our values

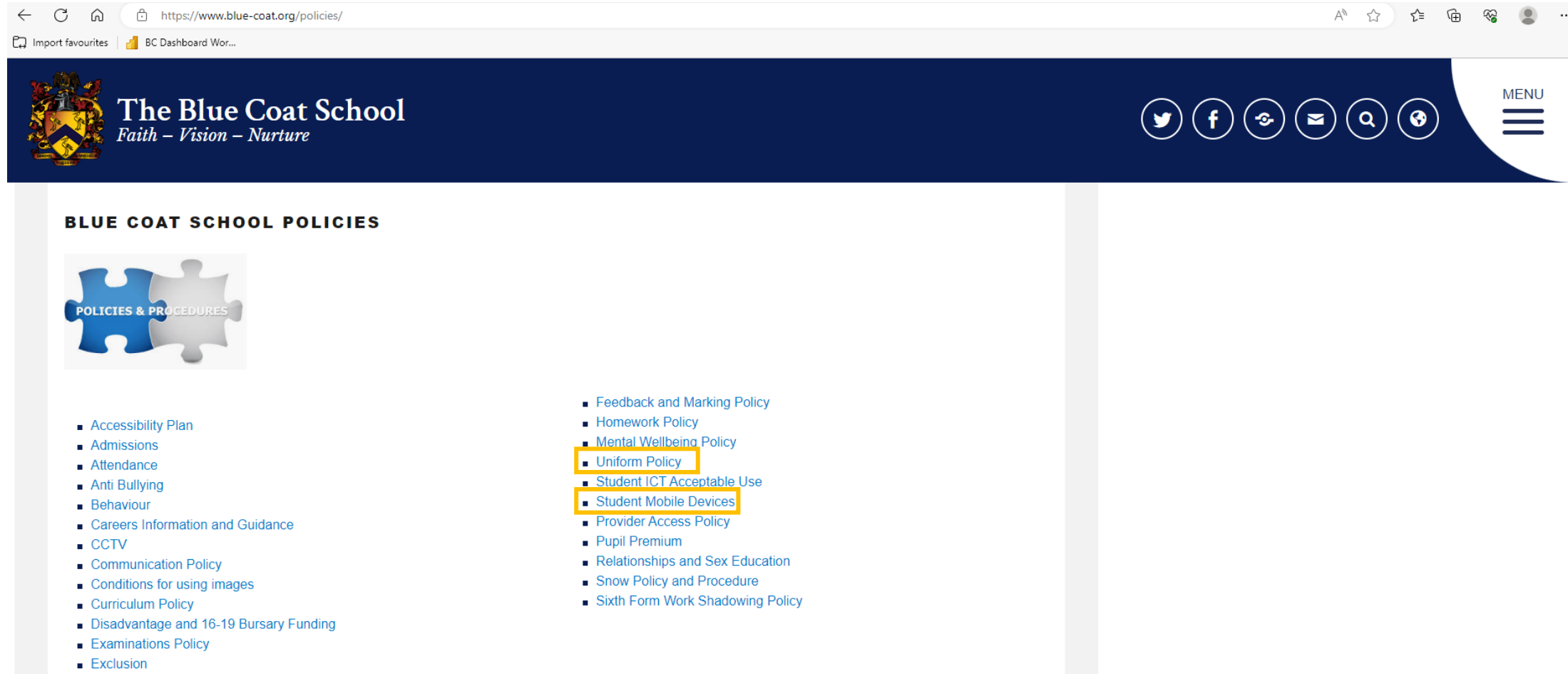
You will be marked as late by your tutor/teacher, and you may be kept behind to finish any work missed.

Any pupil who is repeatedly recorded as late will have to complete a weekly Lates DT held each week on Friday.

Discussion:


What would happen when you are employed and are constantly late for work?

Using the Website



The screenshot shows a web browser displaying the website <https://www.blue-coat.org/policies/>. The page header features the school's crest and name, "The Blue Coat School", with the motto "Faith – Vision – Nurture". Social media icons for Twitter, Facebook, YouTube, Email, Search, and a globe are visible. A "MENU" button is located in the top right corner.

BLUE COAT SCHOOL POLICIES



- Accessibility Plan
- Admissions
- Attendance
- Anti Bullying
- Behaviour
- Careers Information and Guidance
- CCTV
- Communication Policy
- Conditions for using images
- Curriculum Policy
- Disadvantage and 16-19 Bursary Funding
- Examinations Policy
- Exclusion
- Feedback and Marking Policy
- Homework Policy
- Mental Wellbeing Policy
- Uniform Policy
- Student ICT Acceptable Use
- Student Mobile Devices
- Provider Access Policy
- Pupil Premium
- Relationships and Sex Education
- Snow Policy and Procedure
- Sixth Form Work Shadowing Policy

THE HOW...

How have we created the community we have today?

- A culture of shared values and expectations
- Expectations Curriculum

Expectation: Mobile phones should never be used in school and should remain switched off in bags. At the end of the school day, phones should not be seen or used until you've exited the school building.

Why?

At the Blue Coat we value politeness and attentiveness.

- Phones take us away from the here and now and means we aren't attentive to those around us. When we are distracted by our phones we cannot give others our full attention and this comes across disinterested. We show politeness to others by listening carefully and paying them our full attention. Those young people who spend more time face to face with their friends in person report feeling happier.
- Having our phones switched off means our focus is not elsewhere.
- Phones impact on learning. There is so much research now which shows that just having our phone on us, reduces our concentration. In school we need to have the self control to focus on our work and not what is on our phones. If we do this, we will make more progress.
- Not having phones in school means we reduce social media incidents

Research has documented

- The negative effects of screens on young people including greater risk of depression, anxiety and isolation.
- Time on screens degrades attention and concentration skills
- When the brain becomes more accustomed to constant changes, the more it struggles to adapt to non-digital activity where things don't move as fast.

How will you be challenged?

Staff will remind you of our values

Your phone will be confiscated for 5 days.

Inappropriate or targeted behaviour via social media will have a greater sanction and a restorative follow up

Discussion:

What do I do if I need to contact home in the school day?



COMMUNICATION

New Inbox	
Y7pastoral@blue-coat.org	Year 7 Director of Learning
Y8pastoral@blue-coat.org	KS3: Pastoral Officer
Y9pastoral@blue-coat.org	
Y10pastoral@blue-coat.org	KS4: Pastoral Officer
Y11pastoral@blue-coat.org	

medical@blue-coat.org –
For all appointment requests
Condition updates



Changes to Communication Platform

